



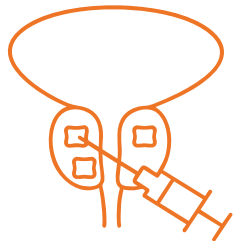
*Ultrasound-based  
computer aided  
diagnosis for  
prostate cancer*



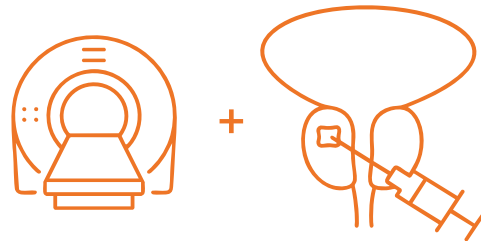
# PCaVision: a novel approach in facilitating prostate cancer diagnosis

## Existing diagnosis methods

---



or

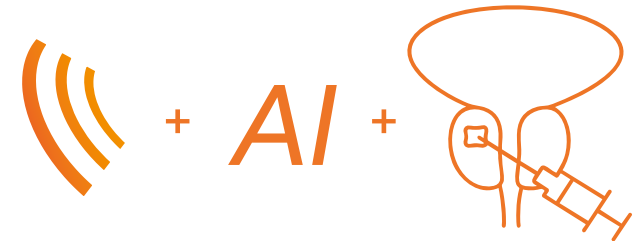


Systematic Biopsy is invasive and has limited sensitivity.

MRI imaging followed by Targeted Biopsy, offers better sensitivity but adds significant waiting time and cost.

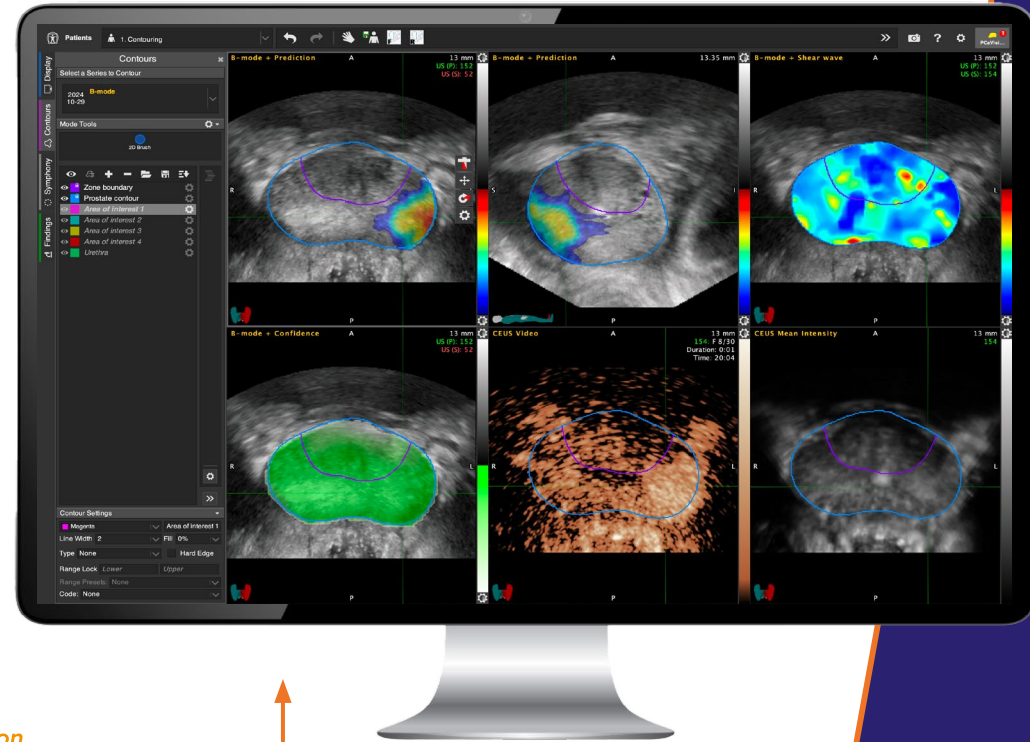
## PCaVision diagnosis

---

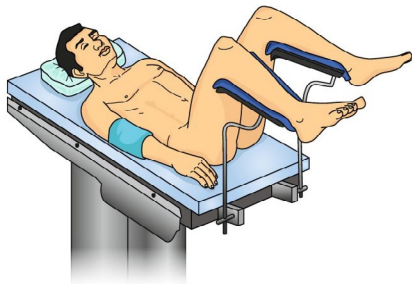


Ultrasound imaging plus PCaVision (AI) analysis followed by Targeted Biopsy, delivers high quality diagnosis, and a minimum lapse time pathway at low cost.

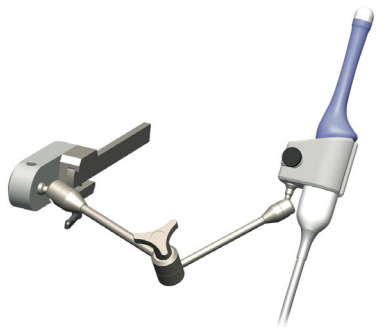
# Ultrasound-based computer aided diagnosis for prostate cancer



# Analysis based on multi-modal 3D transrectal ultrasound (TRUS) recording sequence

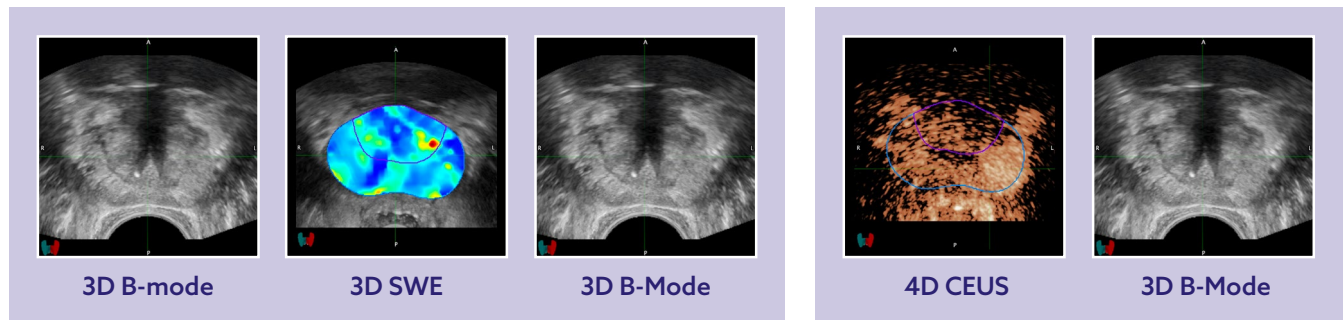


Patient placed in lithotomy position



Single 3D probe, positioned and stabilized using custom fixture

## Automated sequence recording



**Recording total lapse time is only 20 minutes**

Easy to execute: TRUS experienced operator is expert after 3 procedures

Click or scan the QR code to watch the recording procedure



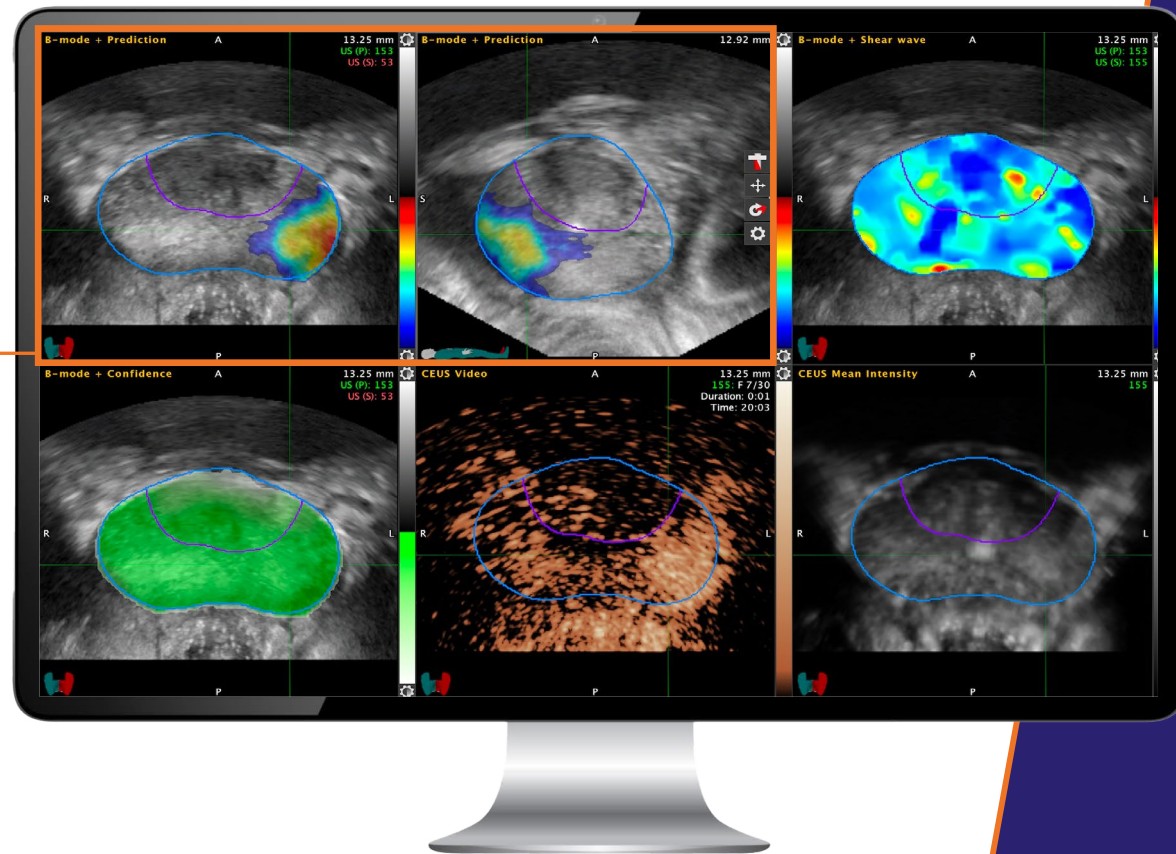
# When detected, PCaVision generates clear indication of csPCa regions of interest for targeted biopsies (TBx)

The PCaVision software automatically starts the csPCa analysis after completion of the recording sequence.

The results are available and displayed in the PCaVision DICOM user interface.

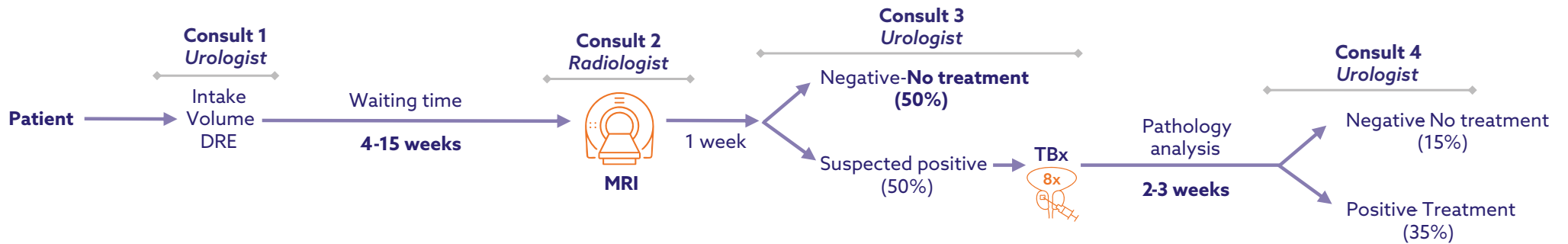
**The transversal and sagittal B-Mode views are overlaid with a heatmap clearly indicating suspicious csPCa lesions.**

A cognitive TBx report or a fusion export file can be directly created in the user interface.

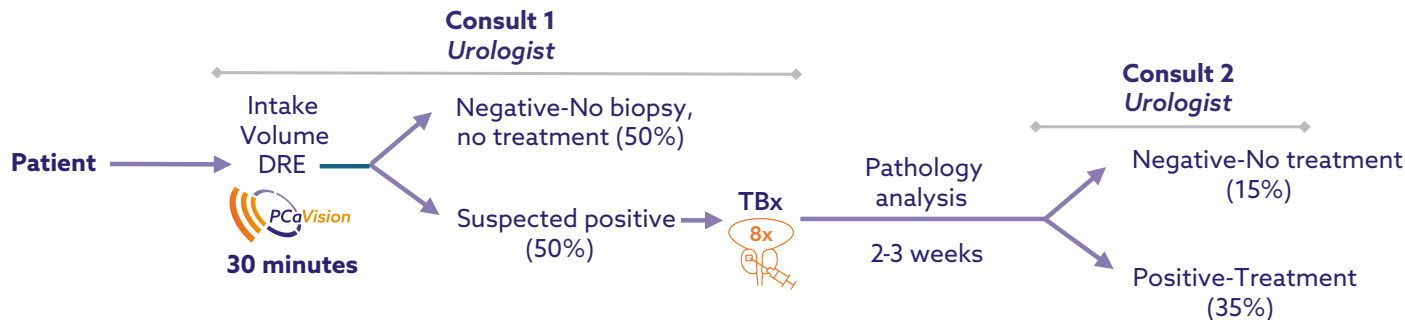


# Advantages PCaVision pathway over MRI

## MRI pathway



## PCaVision pathway



### Better for the patient

Negative patients receive outcome after 30 minutes compared to after 4-15 weeks in the MRI pathway.

### Better for the clinician & patient

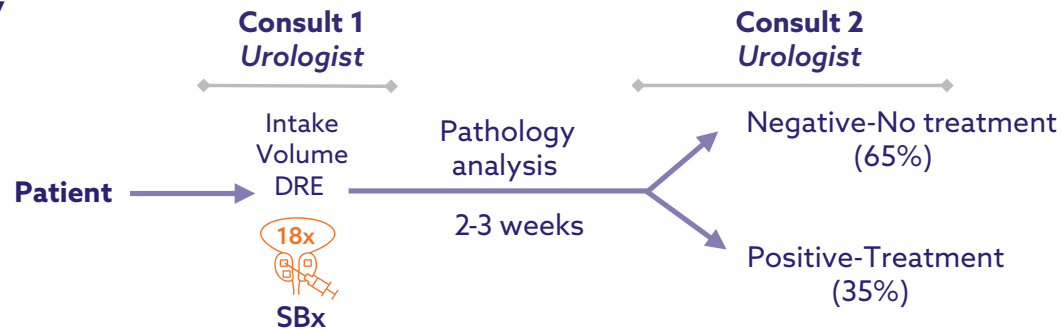
Minimal pathway planned and executed by urologist only; no dependency on radiologist.

### Reduced cost

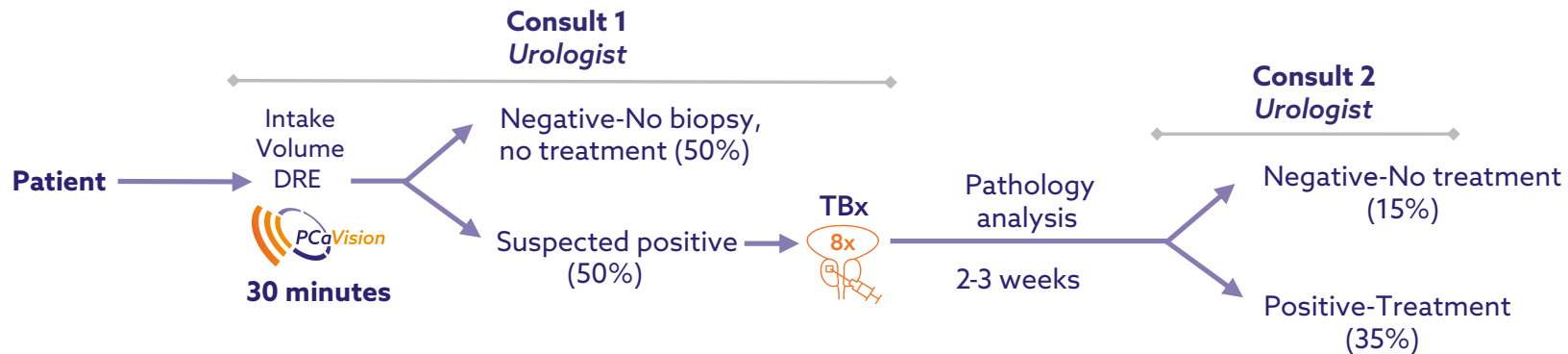
Leading to increased access to care.

# Advantages PCaVision pathway over systematic biopsies (SBx)

## SBx pathway



## PCaVision pathway



### Better for the patient

Negative patients receive outcome after 30 minutes without being exposed to biopsies. Positive patients: 50% biopsy reduction.

### Better for the clinician and patient

Comparable cancer detection rate  
75% reduction of biopsies.



**JADS Venture Campus**  
Sint Janssingel 88  
5211 DA 's-Hertogenbosch  
The Netherlands

[info@angiogenesis-analytics.com](mailto:info@angiogenesis-analytics.com)  
[angiogenesis-analytics.com](http://angiogenesis-analytics.com)

